

## COMPANY PROFILE

**S. S. ENGINEERING** is in the field of Manufacturing & Exporting of Chemical Processing equipments for the past three decades providing innovative & cost effective solutions to the Machinery & Equipment needs of various industries viz.

- **BULK DRUGS**
- **PLASTICS**
- **FOOD PROCESSING**
- **POLYMERS**
- **CHEMICALS**
- **ADHESIVES & COATINGS**



### Our product range includes

- **REACTION VESSEL (JACKETED & LIMPET)**
- **HEAT EXCHANGERS (CONDENSOR)**
- **STORAGE TANKS**
- **MIXERS**
- **BLENDERS**
- **FILTERS**
- **EVAPORATORS**
- **DRYERS (DRUM DRYERS)**
- **CENTRIFUGES (HYDRO EXTRACTOR)**
- **DISTILLATION PLANTS**
- **DISTEMPER PAINT PLANT**

### We undertake turnkey project for

**BULK DRUG PLANT, POLYESTER RESIN PLANT, PHENOL FORMALDEHYDE RESIN PLANT, DISTEMPER PAINT PLANT, CATIONIC BITUMEN EMULSION PLANT, PVA/ALKYD RESIN PLANT**

We also undertake development of various equipments as per Customers drawings, design and or Specifications.

We have full fledged production set-up comprising of Pyramid type Plate & Pipe Bending machines, Coil forming Hydraulic Press, Center Lathes, Drill, Air Plasma, TIG/MIG Welding Rectifiers, Hydraulic Testing Machine etc.

We have good teams of qualified production personnel comprising of qualified X-ray welders, fitters, engineers, working under quality conscious skilled supervisor.

We assure timely execution of work entrusted to us maintaining optimum quality of workmanship giving reliable and trouble free performance of the Machines manufactured by us.

## CENTRIFUGE - 4 POINT

Heavy Inertia plate and Anti vibration Mounts helps to isolate the vibration in a 4 point centrifuge.

### ADVANTAGES

1. Simple operation
2. Level of Vibrations much lower
3. Easily mounted on upper Floors
4. Machine can be easily relocated
5. Firm grouting not required

### DRIVE

The drive consists of Motor mounted on Inertia plate driven through V Belt totally closed .

### DRIVES & TRANSMISSIONS

- Mechanical clutch pulley
- Variable frequency \Drive (Inverter)
- Fluid Coupling

### TYPE OF CENTRIFUGES

1. Manual Top discharge

In a manual top discharge centrifuge, the solid material is scooped out manually from the top of the centrifuge



### TECHNICAL SPECIFICATIONS

MODEL	SS-24	SS-36	SS-48	SS-60
Basket Diameter mm	600	900	1,200	1,500
Depth mm	300	425	500	500
Max. Basket Revolution RPM	1,000	1,000	900	800
Filtration Area Mtrs <sup>2</sup> Area	0.56	1.2	1.88	2.36
Motors H. P.	3	7.5	15	20
Rated charge in Basket Ltrs.	50	140	280	400

**Note : We reserve the right to change size and designed features.**

## CENTRIFUGE - 4 POINT



2. Bag lifting Top discharge  
The Filter bag placed inside the basket retains the solid within the basket. This bag can be lifted using chain pulley manually or motorized mode. Thus the discharge of solid cake is instant and fast, facilitating faster batch with less labour involved



3. Fully Body opening for easy cleaning  
The outer body of the centrifuge hinges open using electric systems, Pneumatic or Hydraulic.

### ADVANTAGES

- Easy access for effective cleaning inside surface of outer body and other internals
- Inspection of Inner surface of the outer body, outer surface of basket & other Internals.

### MATERIAL OF CONSTRUCTION

The centrifuge material of construction is Carbon Steel, Stainless Steel and Rubberlined

### TECHNICAL SPECIFICATIONS

MODEL	SS-24	SS-36	SS-48	SS-60
Basket Diameter mm	600	900	1,200	1,500
Depth mm	300	425	500	500
Max. Basket Revolution RPM	1,000	1,000	900	800
Filtration Area Mtrs <sup>2</sup> Area	0.56	1.2	1.88	2.36
Motors H. P.	3	7.5	15	20
Rated charge in Basket Ltrs.	50	140	280	400

**Note : We reserve the right to change size and designed features.**

## CENTRIFUGE

### TECHNICAL SPECIFICATIONS

MODEL	SS-24	SS-36	SS-48	SS-60
Inner Basket thickness	4 mm	5 mm	6 mm	8 mm
Top lid thickness	4 mm	5 mm	6 mm	8 mm
Outer Body thickness	4 mm	5 mm	6 mm	8 mm
Pulley	Mechanical clutch pulley	Mechanical clutch pulley	Fluid Pulley	Fluid Pulley
Total Weight	800 kgs	1,000 kgs	3,800 kgs	4,000 kgs

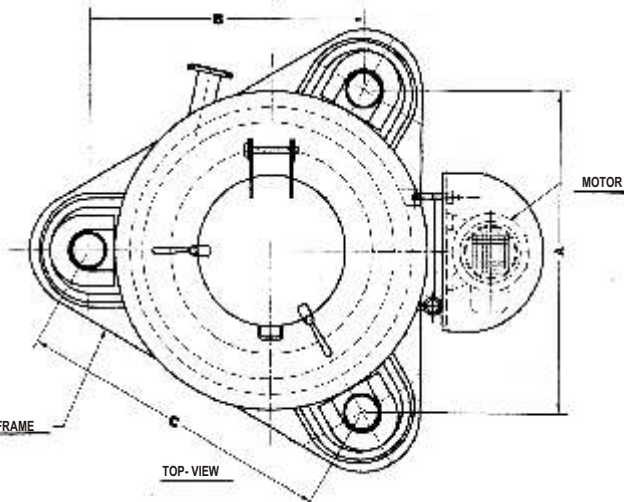
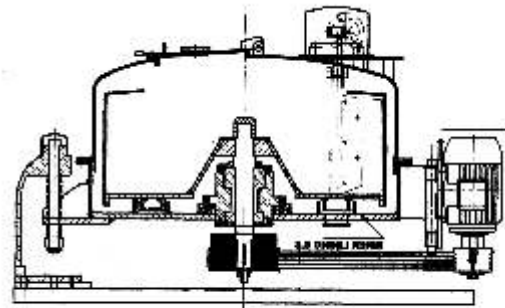
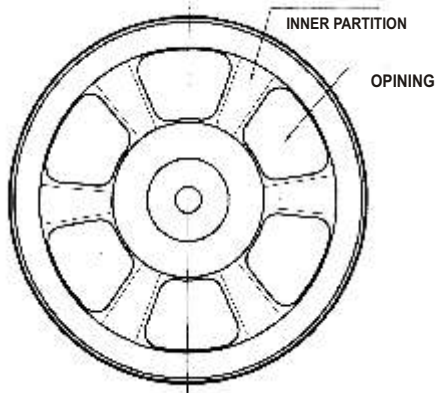
### IN CARBON STEEL RUBBER LINED

MODEL	MSRL-24	MSRL-36	MSRL-48	MSRL-60
Inner Basket thickness	M.S. 5 mm	M.S. 6 mm	M.S. 8 mm	M.S. 8 mm
Top lid thickness	M.S. 5 mm	M.S. 6 mm	M.S. 8 mm	M.S. 8 mm
Outer Body thickness	M.S. 5 mm	M.S. 6 mm	M.S. 8 mm	M.S. 8 mm
Pulley	Mechanical clutch pulley	Mechanical clutch pulley	Fluid Pulley	Fluid Pulley
Total Weight	900 kgs	1,200 kgs	4,000 kgs	4,200 kgs

### CENTRIFUGE BEARING SPECIFICATIONS

MODEL	SINGLE ROW SERIES, CYLINDRICAL METRIC, ROLLER BEARING NF - 300 WITH LIPS ON INNER RING & SINGLE FLANE OUTER RING							
	NF - 300	ID	OD	WIDTH	LOAD RATING - KN		SPEED LIMIT RPM GREASE	POSITION
					DYNAMIC-C	STATIC-CD		
SS- 24	NF - 312	60	130	31	112	82.5	5,500	TOP ↑
	NF - 311	55	120	29	101	72.5	5,900	BOTTOM ↓
SS - 36	NF - 315	75	160	37	173	133	4,400	TOP ↑
	NF - 314	70	150	35	144	109	4,700	BOTTOM ↓
SINGLE ROW SERIES, DEEP GROVE METRIC RADIAL 6300 BALL BEARING								
SS - 48	6320	100	215	47	133	132	3,200	TOP ↑
	6319	95	200	45	118	111	3,300	BOTTOM ↓
SS - 60	6321	105	225	49	141	144	3,000	TOP ↑
	6320	100	215	47	133	132	3,200	BOTTOM ↓

### BOTTOM DISCHARGE CENTRIFUGE



SR.No.	MODEL	A	B	C
1	SS 24	740	965	965
2	SS 36	955	1255	1255
3	SS 48	1290	1660	1660
4	SS 60	1460	1915	1915

#### TRI. ANGULAR BASE FRAME FOUNDATION HOLE SIZE